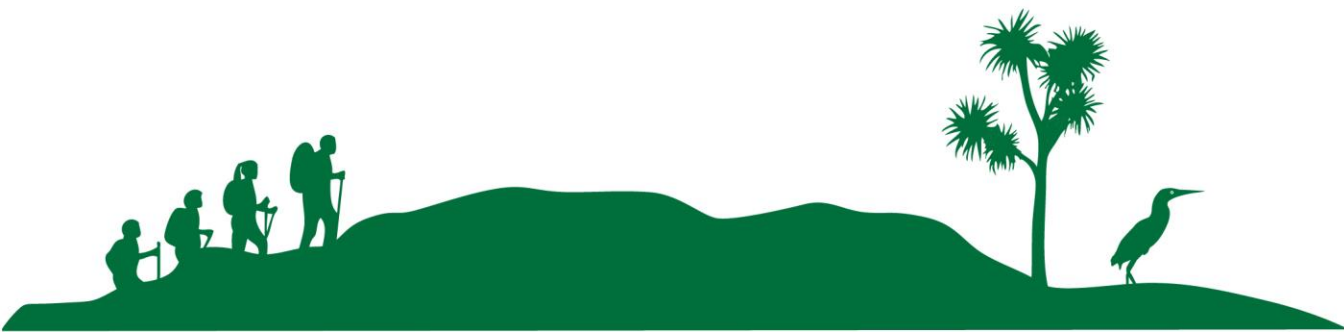




Aotea Great Barrier
ENVIRONMENTAL TRUST

Strategic Plan

From 2020 to 2022 inclusive





*Our vision is to see the return of kōkakō, tīeke and
other species lost to Aotea*

Our mission

Work with Aotea's mana whenua and community to protect biodiversity, re-introduce lost species, eradicate rats and feral cats, and grow a sustainable, ecology-based economy.

Our values

Voice for biodiversity | Open communication | Evidence-based
Integrity | Respect for mana whenua | Inclusion
Commitment | Innovation | Trust

Context for our work: growing support for conservation on **Aotea**

Aotea is NZ's largest tract of possum and stoat-free forest

High-quality marine environment and more than 50 islets harbouring rare species

Several pest-free islands – Kaikoura, Motuhaku, Rakitu

Hirakimata is site of main takoketai/black petrel colony and cloud forest unique in region

Internationally significant biodiversity “ark” for seabirds and wetlands at Kaitoke and Okiwi

Other high biodiversity sites on Rakitu, Te Paparahi, Mt Young, Te Ahumata and Windy Hill

Stronghold of pāteke, kākā, NZ dotterel, bittern, chevron skink, Caspian tern, banded rail, rare plants and many other species

Mana whenua are Ngāti Rehua Ngātiwai ki Aotea – want to restore mauri of motu including Bring Back Kōkakō

Approximately 60% DOC administered land including Aotea Conservation Park, scenic reserves and islands

About 1,000 permanent residents and approx. 1100 landowners, of whom >20% actively manage pests

Key sources of expertise in Windy Hill Sanctuary, Glenfern Sanctuary and Motu Kaikoura

Local Board's Ecology Vision and PFNZ 2050 bid in 2017 outlined roadmap to suppressing pests and vision for a pest free island

Auckland Council investment in Biosecurity and conservation projects increasing – directly and through the local board

Growing concern about marine protection to protect fish stocks and stop marine dumping

Growth in community participation in restoration and conservation activities



Our goals for 2020-2022

1. Build partnerships with mana whenua
2. Strengthen and enable community and landowner action
3. Provide targeted research and information to support action
4. Advocate for Aotea's taonga ecosystems and species





We will build strong, collaborative relationships to achieve these goals

GREAT WILDLIFE

Aotea/Great Barrier Island is dominated by the Aotea Conservation Park, which covers more than 12,000 hectares.

The island is a stronghold of diverse habitat for significant conservation species, including ocean, beaches, estuaries, wetlands, streams and regenerating ancient forests. This is why wildlife thrives here.

Glenfern Sanctuary
Regional Park, and with Katuku Peninsula, a pest management hub, home to 3 species of seabird and chevron skink

Motu Kaikoura and Motuhaku
Predator free island and lodge on Kaikoura

Hirakimata (Mt Hobson)
Takemata (black petrel) colony, national high biodiversity site with North Island robin, tomot, kaka, kiwi's pine and kanuka species

Port Fitzroy
Marine mammals can often be seen - bottlenose and common dolphin, orca

Colville Channel
Marine mammals can often be seen - Bryde's whale, fur seals, a seabird hotspot

50+ islets, 40+ rock stacks
Home to rare plants, lizards & seabird breeding areas

Mahuki/ Broken Islands
Gannet colony

Mt Young
Kauni and other forest types, a national high biodiversity site

Te Ahumata (White Cliffs)
National high biodiversity area

Kaitoke wetland
Nationally significant intact maunga to moana, fernbird, spotted crake, bittern

Te Paparahi
Largest otcol, possum and browsing animal free forest in NZ, kauri dieback free, last Makiaki site on Aotea, weechesters frog, long tailed bat

Okiwi basin and reserves
Pukeko, kakariki, kaka, banded rails, community pest projects

Whangapoua Estuary
Intact dune system, dotterel, banded dotterel, Caspian tern, wrybill, migratory waterfowl, pukeko, oystercatchers

North east coast
Unique marine features and species including intact reefs

Rahitu
Predator free, on Northern NZ seaboard highway, koru/ahia other rare plants

Harataonga
High quality forest, kauri dieback free scenic reserve, dotterel, kaka and pukeko

Awana, Kaitoke and Medlands beach & dunes
Intact dune and estuary systems, dotterel, oystercatcher, pukeko

Windy Hill
This nationally recognised sanctuary anchors pest control in south - includes intact coastal broadleaf and kanuka forests

Windy Hill

Windy Hill

We acknowledge the essential contribution our partners are making to these goals:

- Ngāti Rehua Ngātiwai ki Aotea, as kaitiaki of Aotea and its surrounds
- Foundation North
- WWF
- Aotea Great Barrier Local Board
- Auckland Council
- Department of Conservation
- Natural Habitats
- Our private donors
- More than 120 life members and our past trustees
- Our 1,000+ and growing social media followers
- Our science volunteers, backstage supporters and on-the-ground people getting it done.



Aotea Great Barrier
ENVIRONMENTAL TRUST

Where we will focus our efforts from 2020 to 2022

Our key activities in 2020-21

Objective	Key activities include...
1. Build a partnership with mana whenua	<i>Supporting Ngāti Rehua Ngātiwai ki Aotea aspirations and restoration projects, both directly and indirectly, as appropriate</i>
2. Strengthen and enable community and landowner action	<i>Aotea Trap Library Support/umbrella fund community projects (Oruawhara Medlands, Tu Mai Taonga and others), Windy Hill/Glenfern Tīeke project</i>
3. Provide targeted research and information to support action	<i>Aotea Bird Count, State of Environment Reporting (birds, marine, research library), Seabird Survey, Okiwi kākāriki research</i>
4. Advocate for Aotea's taonga ecosystems and species	<i>Education on taonga of Aotea and threats Working in partnership with iwi, DOC, Auckland Council, community towards predator-free Aotea Submissions and issues advocacy</i>



These activities are reviewed and refreshed annually



We will support others to act



Our communications strategy underpins our goals



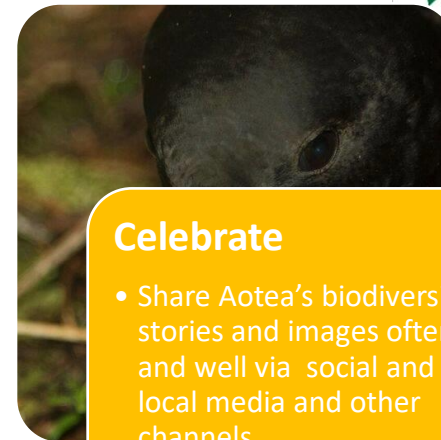
Educate

- Key message: Aotea's treasures are unique and under threat – they need your protection
- Partner with others to build love of/connection to nature (in schools, via social & local media, events)
- Grow knowledge through increasing participation in pest management and restoration



Advocate

- Maintain relationships with iwi, agencies (DOC, council) and other key stakeholders
- Ensure decision makers are provided with timely information about the state of ecosystems, key species and threats
- Be active in the submissions, planning, communication and other processes that relate to Aotea's ecology



Celebrate

- Share Aotea's biodiversity stories and images often and well via social and local media and other channels
- Help others to tell Aotea's biodiversity stories – in season and "at place"
- Share stories about Aotea's conservation heroes at work and why they do what they do

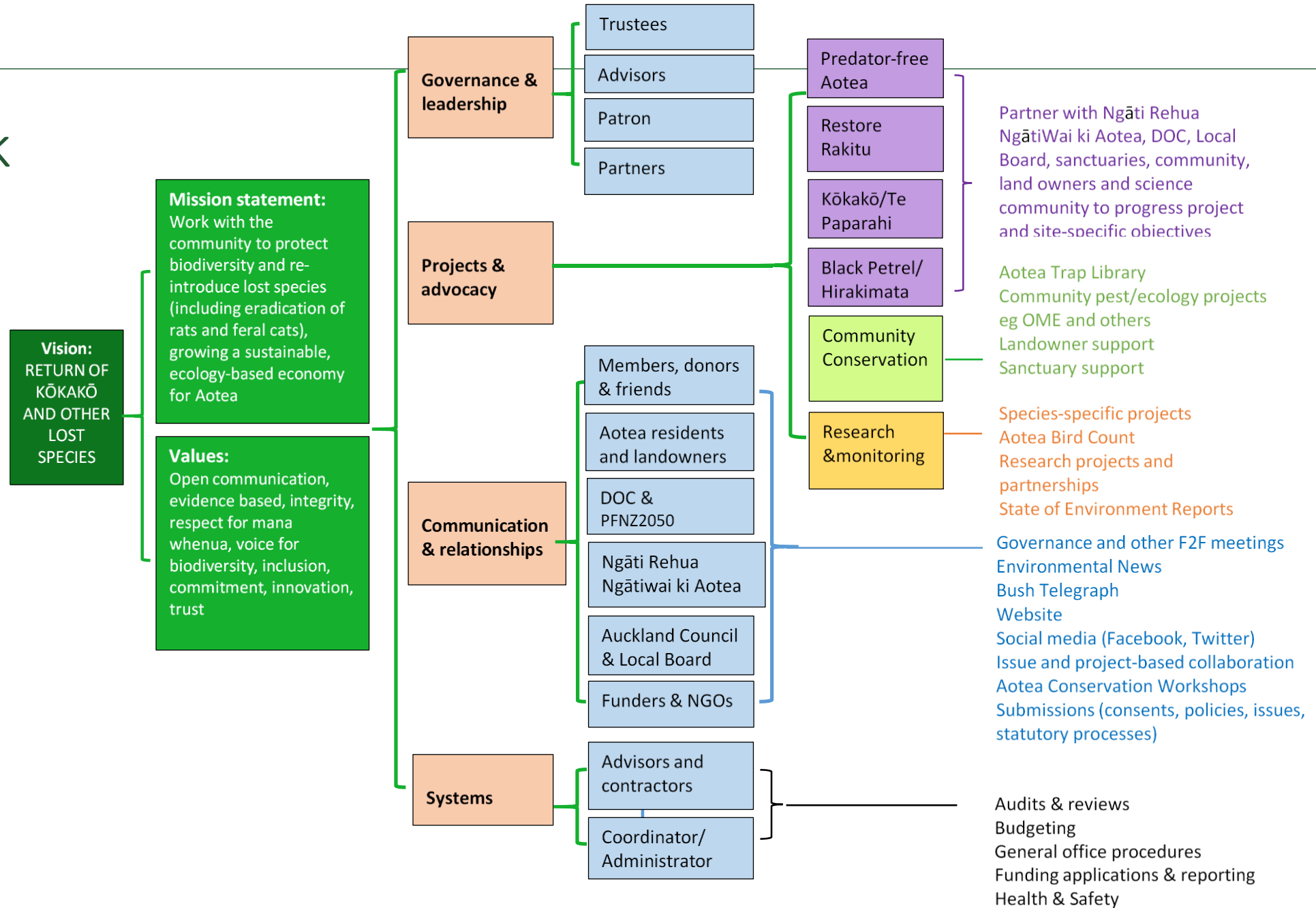
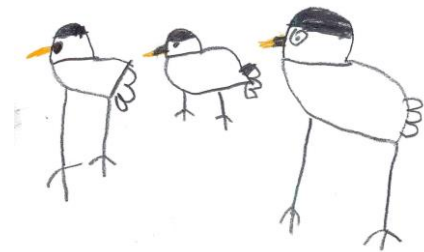




If not us, then who? If not now, then when?

Our framework

... pulling it all together





Aotea Great Barrier Environmental Trust

PO Box 20, Claris, Aotea | Great Barrier Island, 0961

e: contact.gbiet@gmail.com

m: 022 3442 438

www.gbiet.org